

# PALM HAVEN



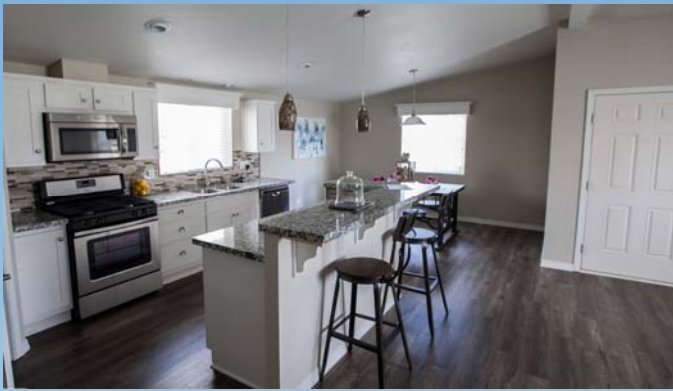
*We measure our success*



*by the size of your smile!*

**SKYLINE**<sup>®</sup>

*San Jacinto Division*



# PALM HAVEN by Skyline

## Standard Features

### Interior

- ▲ 7'-6" Sidewalls with Cathedral Ceiling
- ▲ ½" Tape & Texture Drywall Throughout
- ▲ Hand-Finished Knock-Down Ceiling
- ▲ Semi-Gloss Interior Paint
- ▲ Hardwood Shaker Style Component Cabinets with Hidden Hinges
- ▲ Wood Closet Shelving and Wood Pole
- ▲ 2-Panel By-Pass Closet Doors per Plan
- ▲ 2-Panel Interior Doors with 3-Mortised Hinges
- ▲ Single Lever Handles
- ▲ Shaw Live Wire II Carpet
- ▲ No-Wax Congoleum® Diamondflor Vinyl Floor Covering Kitchen and Baths
- ▲ Metal Mini Blinds
- ▲ Painted Door Casing

### Kitchen

- ▲ Hardwood Shaker Style Component Cabinets with Hidden Hinges
- ▲ White Lined Interior Cabinets with Adjustable Base and Overhead Shelves
- ▲ Whirlpool® Brand Name Appliances (Gas or Electric)
  - 18 Cu Ft Frost-Free Refrigerator
  - 30" Deluxe Gas Range with Electronic Ignition, Window, Clock & Timer
  - 30" Range Hood Vent
- ▲ Choice of Appliance Color (White or Black)
- ▲ Stainless Steel Sink
- ▲ Delta® Brand Name Single Lever Faucet with Pull-Out Sprayer
- ▲ Bank of Drawers
- ▲ Laminate Countertop with Self Edge
- ▲ 6" Laminate Backsplash

### Baths

- ▲ 60" 1-Piece Fiberglass Tub/Shower with Single Lever Diverter
- ▲ China Sink with Overflow & Pop-Up Drain
- ▲ Delta® Brand-Name Dual-Control Faucets
- ▲ Vanity Strip Light
- ▲ Vanity Mirror with Beveled Edge
- ▲ Exhaust Fan with Light
- ▲ 36" High lavy

### Baths Continued

- ▲ Laminate Countertop with Self Edge
- ▲ 6" Laminate Backsplash
- ▲ Ventilated Window per Plan
- ▲ Towel Bar & Tissue Holder
- ▲ Wood Shelves
- ▲ Privacy Lock

### Exterior

- ▲ Upgrade R22-11-11 Insulation
- ▲ 3:12 Roof Pitch
- ▲ Dual-Glazed Vinyl Framed Low-E Windows
- ▲ Cempanel® Siding with 25-Year Limited Warranty
- ▲ Owens Corning™ Shingles with 25-Year Limited Warranty
- ▲ 2" X 6" Floor Joists 16" On Center
- ▲ 5/8" Tongue & Groove OSB Floor Decking
- ▲ 2" X 4" Exterior Sidewalls 16" On Center
- ▲ 36" X 80" 6-Panel Front Door with Deadbolt
- ▲ 32" 6-Panel Rear Door
- ▲ 12" Front Overhang
- ▲ 6" Side Eaves (28 Wide Plans)
- ▲ Semi-Gloss Exterior Paint

### Utility, Safety & Energy

- ▲ 100 AMP Exterior Electrical Panel Box
- ▲ 40-Gallon Gas Water Heater
- ▲ Toe-Kick Registers in Kitchen & Baths
- ▲ Smoke Detectors with Battery Back-Up
- ▲ 56,000 BTU Gas Furnace
- ▲ Plumbed for Washer and Gas Dryer
- ▲ Recessed Dryer Vent Box
- ▲ Exterior Light at Front & Rear Doors
- ▲ Deadbolt on Front & Rear Doors
- ▲ Silent Rocker Light Switches
- ▲ G.F.I. Protected Outlets in Kitchen & Baths
- ▲

### Popular Options

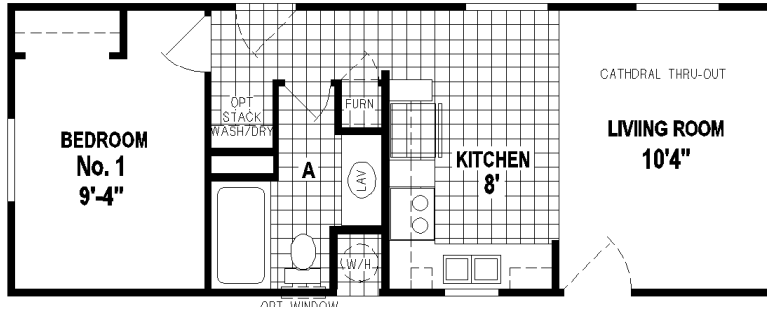
- ▲ 2x6 Exterior Walls with R-19 Insulation
- ▲ Architectural Shingles w/ Lifetime Ltd Warranty
- ▲ Upgrade FHA-Approved Carpet & Pad
- ▲ Residential Baseboard Molding
- ▲ Upgrade Kitchen Appliance Packages
- ▲ Drawer-Over-Door Kitchen Cabinets
- ▲ Wood or Gas Burning Fireplace
- ▲ Granite, Quartz or Solid Surface Countertops
- ▲ Full Height Kitchen Backsplash
- ▲ Upgrade Exterior Siding



# A117-CT

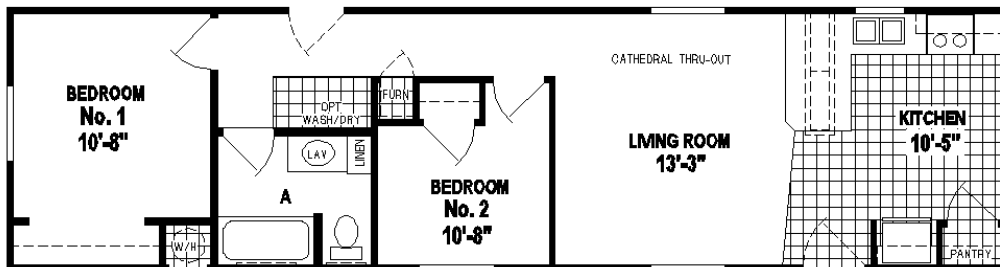
14X36 492 SQ FT 1 BEDROOM 1 BATH

# PALM HAVEN



# A102-CT

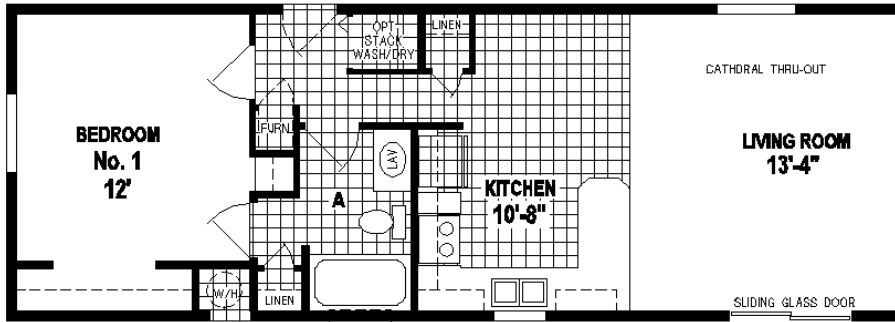
14X52 710 SQ FT 2 BEDROOMS 1 BATH



# A500-CTB

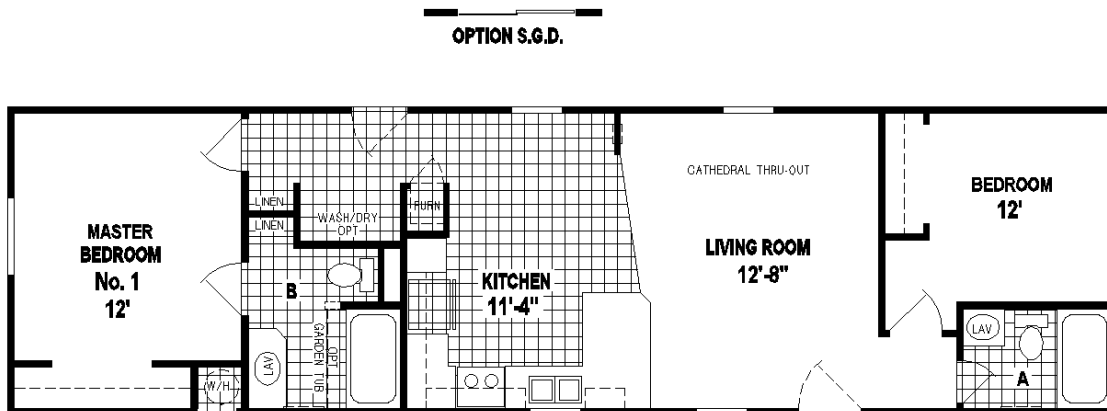
16X44 682 SQ FT 1 BEDROOM 1 BATH

# PALM HAVEN



# A501-CT

16X56 868 SQ FT 2 BEDROOMS 2 BATHS

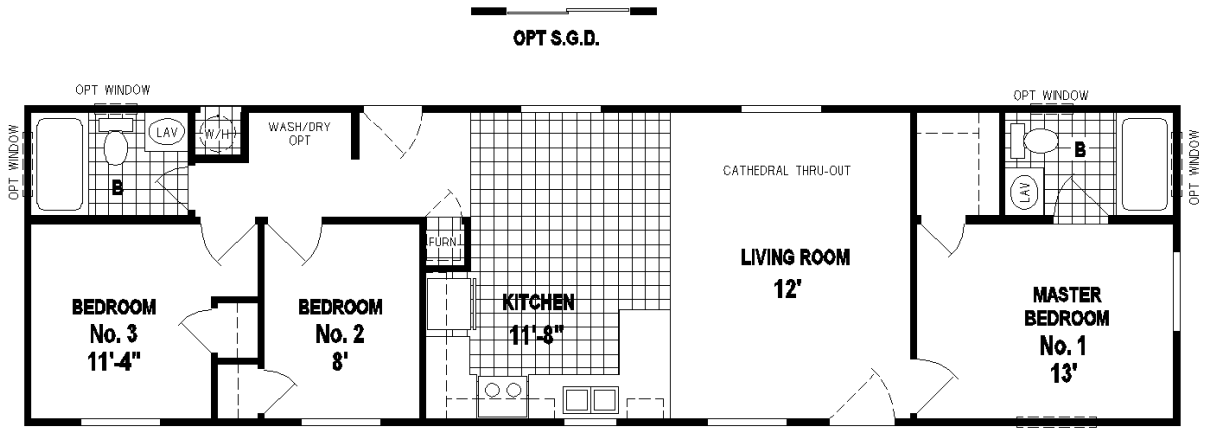




# A541-CT

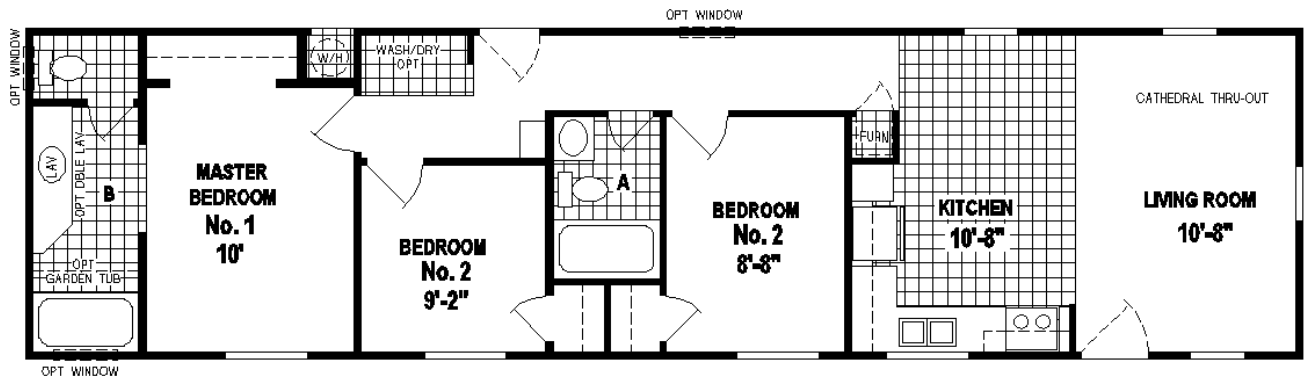
16X56 868 SQ FT 2 BEDROOMS 2 BATHS

# PALM HAVEN



# A506-CT

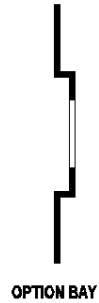
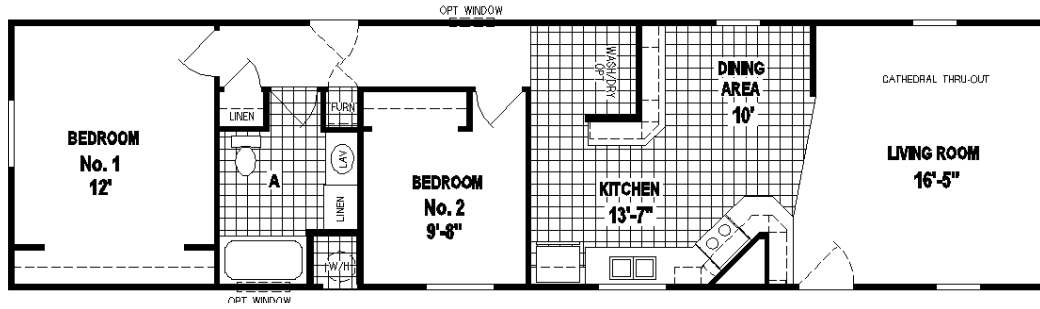
16X60 930 SQ FT 3 BEDROOMS 2 BATHS



# A551-CT

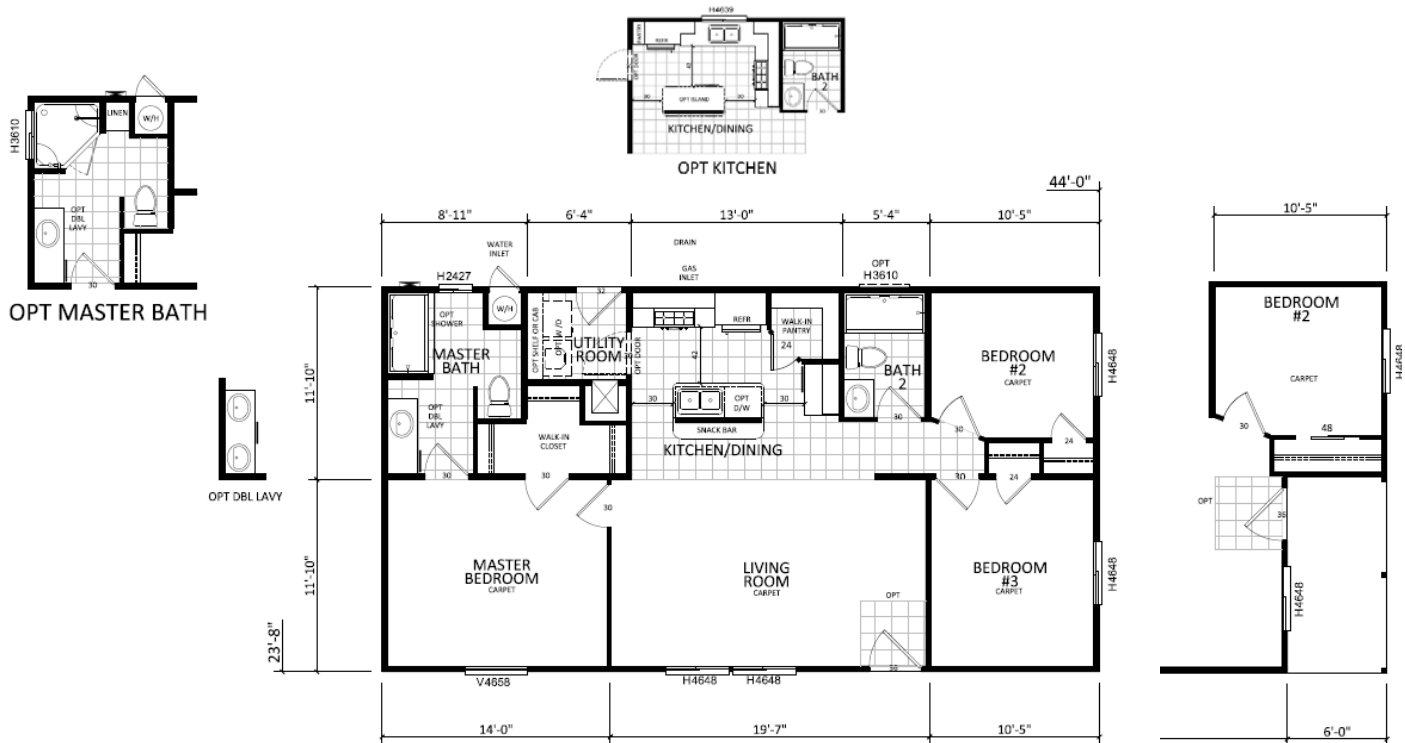
16X60 930 SQ FT 2 BEDROOMS 2 BATHS

# PALM HAVEN



# 2406-CT

24X44 1041 SQ FT 2 BEDROOMS 2 BATHS





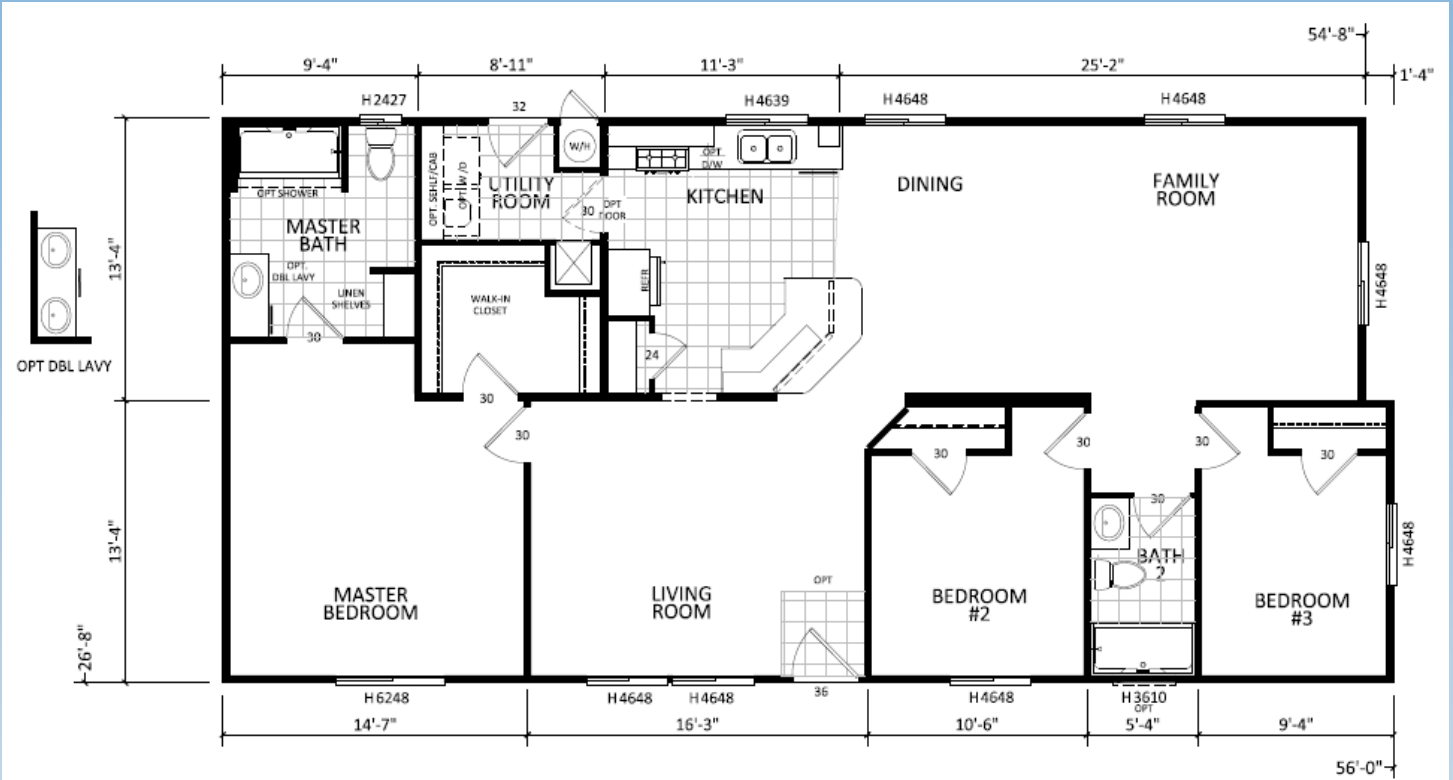




# 3408-CT

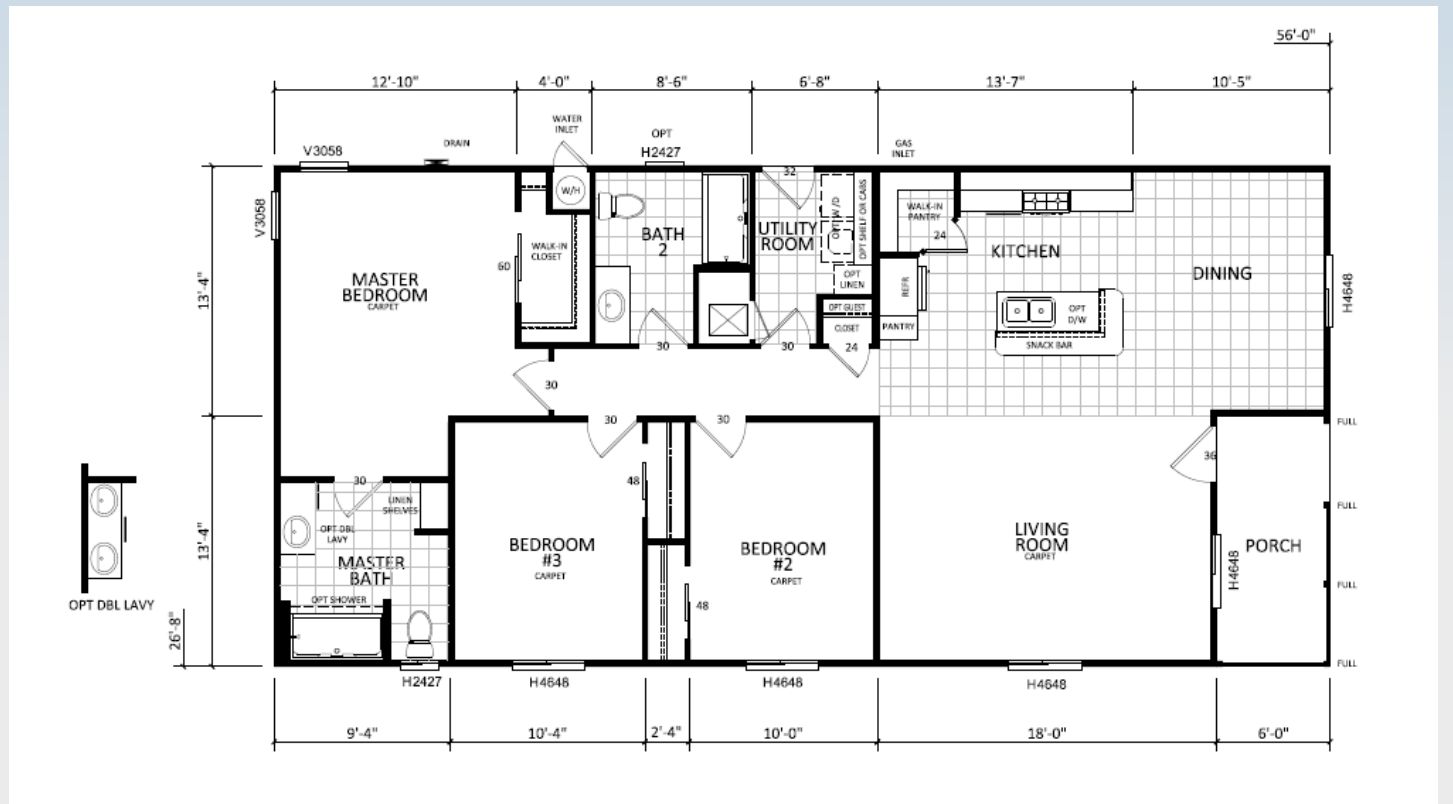
28X54-8/56 1476 SQ FT 3 BEDROOMS 2 BATHS

# PALM HAVEN



# 3410-CT

28X56 1493 SQ FT 3 BEDROOMS 2 BATHS





# Building your home to **GREEN** standards

- Engineered for efficient use of materials
- 80% of construction waste reused or recycled
- Use of engineered lumber
- Low V.O.C. adhesives and paint
- Formaldehyde-free insulation
- Sealed and tested ducting system
- High efficiency toilets
- Efficient distribution plumbing system
- Mechanical fresh air ventilation system



*Proudly helping homeowners conserve energy while helping protect the environment*



499 W. Esplanade  
San Jacinto, CA 92583  
Ph: 800-726-2284

*Visit us online at [www.skylinehomes.com](http://www.skylinehomes.com) to learn more about our homes.*

For your comfort and safety, Skyline home designs are approved and inspected for conformance to Federal standards.

\* Dimensions stated to industry standards. Width and length dimensions are nominal and are not to be used for setup of home on site; consult selling retailers for exact specifications. Overall length does not include approximately four foot hitch. The square footage is approximate and based upon nominal exterior floor size. Room sizes are measured from floor ends and wall centers.

Because of progressive product improvement, all prices & specifications are subject to change without prior notice or obligation to Skyline Corporation.

Your Retailer, an independent contractor, who is not an agent of Skyline Corporation, is the party responsible for your purchase contract and any additions, deletions, alterations, or attachments made to or in your home.